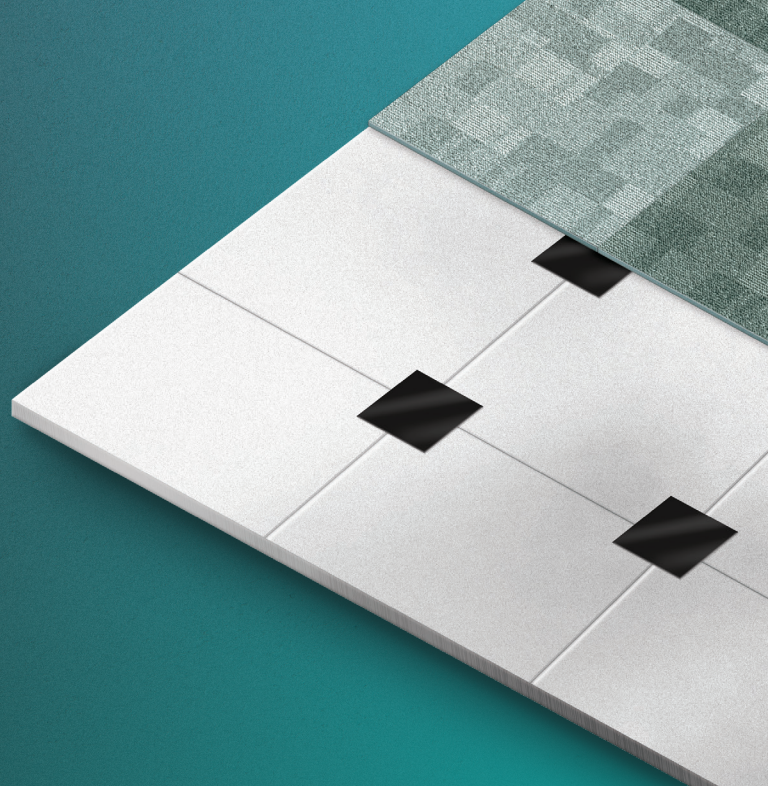


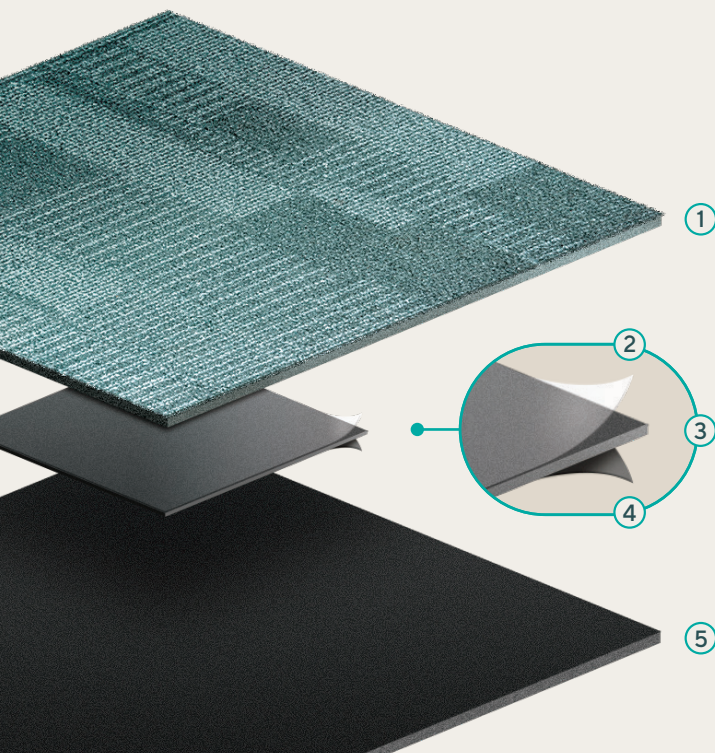
MAGNUS[®] TABS

Smart Tabs that affix carpet tile, woven vinyl or flexible LVT to any magnetically receptive floor, such as Magnus Underlayment, metal raised access floors, or express cure high grab resins.



Using patented IOBAC Dual Grip technology, Magnus Tabs combine dry tack adhesion with magnetism for an outstanding grip!

As in conventional floating floor solutions, tiles are held together horizontally. Due to magnetic attraction, Magnus Tabs enable a strong grip in the vertical direction. The strength of this bond ensures that the tiles are well secured in place until the time comes to uplift them.



1 Floor covering

Carpet tile, +4mm Luxury Vinyl Tile (LVT) or woven vinyl tile.

Floor tiles can be removed cleanly and easily for reuse or recycling. The Magnus Underlayment remains in place, ready for the next installation.

2 Adhesive film layer

Acrylic based adhesive with polyester film liner, odorless, VOC content not applicable.

3 Magnetic film

Flexible strontium ferrite magnetic sheet without plasticisers. Phthalate free.

4 Dual-grip polyurethane coating

VOC-free, odorless plant-based polyurethane resin manufactured mostly from renewable castor oil.

5 Receptive sub-floor

Metal raised access floors, Magnus Underlayment and IOBAC magnetically receptive resins.

